

# TAPIS D'ORIENT



Opérette en 3 actes de J. Burgmein



Grande Fantaisie par  
E. TAVAN

## 1.<sup>ère</sup> PARTIE

### 3.<sup>m</sup>e TROMBONE

Allegretto



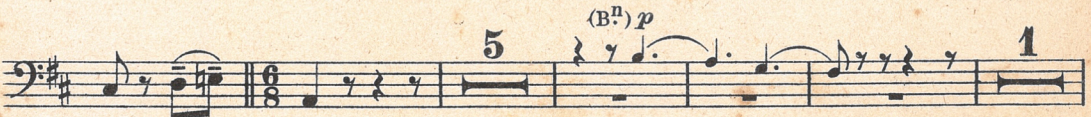
Repli



Andantino



Même mouv<sup>t</sup>:



3.<sup>me</sup> TROMBONE

*mf* **2** *f* *rall.* *p* (Cor.)

**A Allegro**  
**12** Repli *f*

*rall.* **1** **9** Repli *rall.*  
**Tempo di Mazurka**

**a Tempo I°**  
*f*

*Più lento* **1** **11** **Andantino**

Repli (B<sup>n</sup>) *p* *cres.*

**Même mouv<sup>t</sup>**  
**2** **8** **2** Repli *rall.*

*mf* *ff* *mf* *a tempo*

*dim.* *rall.*

3.<sup>me</sup> TROMBONE

Tempo di Marcia mod.<sup>to</sup>

Musical score for the first section, 'Tempo di Marcia mod.<sup>to</sup>'. It consists of three staves of music in bass clef with a key signature of one sharp (F#). The first staff begins with a '2' above the staff and '(Cor.) pp' below. The second staff has '(Cor.)' above and 'f' below. The third staff has '(Cor.)' above and '4' above. The section ends with a double bar line and a key signature change to two sharps (F# and C#).

Marcia vigoroso

Musical score for the second section, 'Marcia vigoroso'. It consists of six staves of music in bass clef with a key signature of one sharp (F#) and a 2/4 time signature. The first staff has 'f' below. The second staff has 'cres.' below. The third staff has 'p' below. The fourth staff has 'cres.' below. The fifth staff has 'f' below. The sixth staff has 'mf' below. The section ends with a double bar line.

Più lento

Musical score for the third section, 'Più lento'. It consists of one staff of music in bass clef with a key signature of one sharp (F#). The staff begins with a '10' above and 'Repli' above. The section ends with a double bar line and 'f' and 'Long' below.

# 2.<sup>ème</sup> PARTIE

## 3.<sup>me</sup> TROMBONE

### B Mouvt de Valse modéré

*f* *p*

*p* *mf cres.*

*f* *p cres.* *f*

*mf cres.* *Repli* *f*

*cres.* *un poco rit.* *f*

4 4 10 8

3.<sup>me</sup> TROMBONE

*un poco rit.*

First musical staff in bass clef with a key signature of one sharp (F#). It begins with a dynamic marking of *f* and contains several measures of music.

Second musical staff in bass clef with a key signature of one sharp. It starts with a first ending bracket labeled '11', followed by a dynamic marking of *ff*, a tempo change to *a tempo*, and ends with a first ending bracket labeled '1' and a *rall.* marking.

Third musical staff in bass clef with a key signature of one sharp. It features a section marked 'G Andante 28' with a key signature change to G major and a time signature change to 12/8. The section is labeled 'Repli (v<sup>as</sup>)' and ends with a *rit.* marking.

Fourth musical staff in bass clef with a key signature of one sharp. It is marked 'Allegretto' and contains two first ending brackets labeled '2'. The dynamic marking *mf* is present at the beginning, and *p* appears later.

Fifth musical staff in bass clef with a key signature of one sharp. It contains a first ending bracket labeled '2' and a *cres.* marking.

Sixth musical staff in bass clef with a key signature of one sharp. It contains three first ending brackets labeled '1' and dynamic markings of *f*.

Seventh musical staff in bass clef with a key signature of one sharp. It contains a first ending bracket labeled '1' and a dynamic marking of *mf*.

Eighth musical staff in bass clef with a key signature of one sharp. It contains a dynamic marking of *f* and several measures of music.

Ninth musical staff in bass clef with a key signature of one sharp. It features a *rall.* marking and a first ending bracket labeled '1'.

Tenth musical staff in bass clef with a key signature of one sharp. It is marked 'All<sup>o</sup> mod<sup>to</sup>' and contains first ending brackets labeled '1', '3', '3', and '7'. Dynamic markings of *mf* are present.

3.<sup>me</sup> TROMBONE

4

*f* *p*

*f* *p*

*f*

*rall.*

All.<sup>o</sup> mod.<sup>to</sup>

*mf*

1 1

*cres.* *f*

*ff*

*rall.* *a tempo*